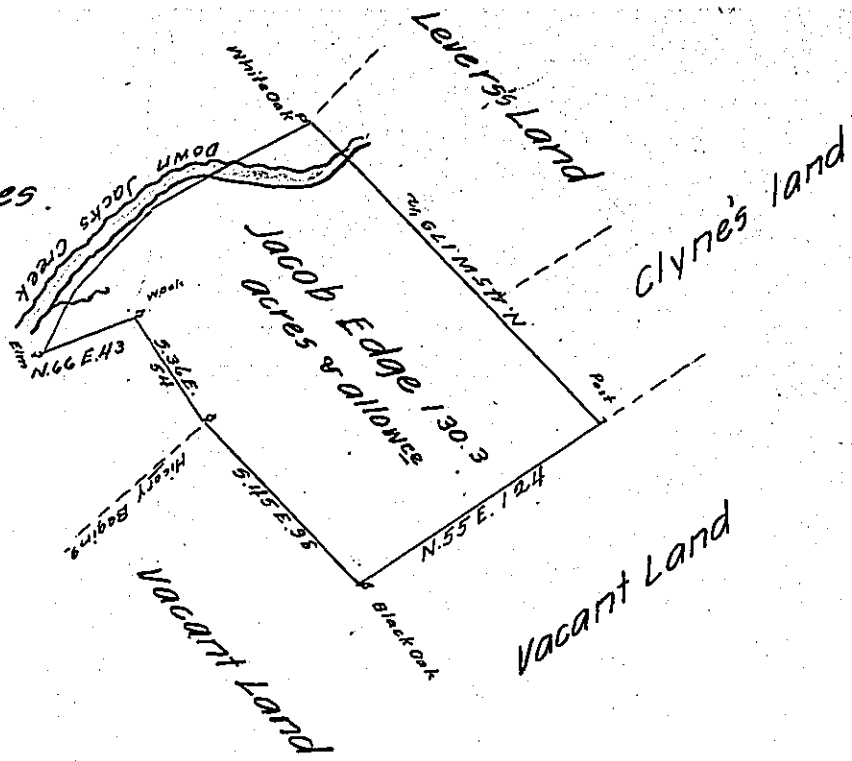


Courses and Distances.

Down Jacks Creek

- 5.60 W. 81 1/2
- 5.42 W. 46
- 5.26 W. 31

46.66 E. 43
158 1/2



21. 405
116 76
716 081

The Draught of a Tract of Land called Strawberry Patch situate on Jacks Creek in the County of Cumberland containing one hundred thirty Acres 51 Perches with the usual Allowance of six Acres p. Cent for Roads survey'd the 25th day of Novem^r 1766. In Pursuance of an Order of Survey to Jacob Edge. Bearing Date at Philad.^a the 29th day of August Anno Dom^o 1766 and numbered 1029

p. Wm Maclay D. S.

To John Lukens Esq^r S. G. }
of Pennsylvania }

IN TESTIMONY that the above is a copy of the original remaining on file in the Department of Internal Affairs of Pennsylvania, made conformably to an Act of Assembly approved the 16th day of February, 1833, I have hereunto set my Hand and caused the Seal of said Department to be affixed at Harrisburg, this twenty second day of September 1904

James D. Brown
Secretary of Internal Affairs.